



SLICKON® FLOW-LUBE™ AEROSOL INDUSTRIAL SPRAY LUBRICANT

WWW.ANTISEIZE.COM

Product Description

SLICKON® FLOW-LUBE™ is an advanced blend of high performance, low viscosity petroleum oils enhanced with micronized P.T.F.E., extreme pressure additives and corrosion inhibitors that provide long lasting lubrication for moving or sliding parts. SLICKON® FLOW-LUBE™ will keep mechanisms running smoothly and lasting longer.

SLICKON® FLOW-LUBE™ offers superior lubrication and anti corrosion protection better than other "All Purpose Lubricants"

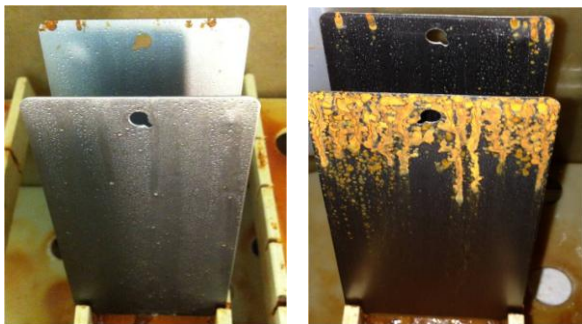
SLICKON® FLOW-LUBE™ will aid in displacing moisture from the surface of your parts. It contains special wetting agents that help to penetrate grime so the lubricant maintains contact with the surface.

An extension tube is provide for those hard to reach places for pinpoint applications.

Test Results: Corrosion Protection.

These test results show the superior corrosion protection that SLICKON® FLOW-LUBE™ provides.

ASTM B117 Salt Fog
72 HR. SALT FOG EXPOSURE



SLICKON® FLOW-LUBE™

VS. A National Leading Brand

Test Result: Pin & Vee , ASTM D3233A

The Pin & Vee test evaluates wear, friction and extreme pressure properties of materials and lubricants. SLICKON® FLOW-LUBE™ was designed to outperform other leading brands of spray lubricants.

SLICKON® FLOW-LUBE™ 2,200 lbs

A leading National Brand: 1,300 lbs

Typical Properties

Property	Value
Color	Light amber
Base Oil	Light petroleum w/ P.T.F.E.
Specific Gravity	0.82
VOC	24.72g/L
Temperature Range	-60°F to 475°F
Odor	Light, pleasant
Shelf Life	3 years or more

Features:

- Long lasting lubrication
- Frees sticky mechanisms
- Contains P.T.F.E. for enhanced lubrication
- Extends Equipment life
- Protects against rust and corrosion
- Does not contain silicones or wax
- Ideal for humid environments
- Extension Tube for pinpoint lubrication

Uses: Conveyors, forklifts, hand truck and cart wheels, door hinges, loading dock doors, truck doors, machinery, tools, office equipment, shredders, desk drawers, locks, cables, chains, gears, slides, channels, landscaping equipment, snow removal, outdoors equipment, recreation gear, and so much more.

Directions for Use:

Shake can well before use

Spray at a distance of 6" to 12" from part or use extension tube.

Wipe away dirt or grime and re-apply for best results

Cautions

This product is not recommended for use in an oxygen system. Read all information on labels and Safety Data Sheets prior to use. All products should be tested and evaluated for a particular purpose prior to use.

GHS compliant

[This product requires GHS pictograms on labels.](#)

[Refer to Label and SDS for GHS information.](#)

ANTI-SEIZE TECHNOLOGY

2345 N. 17th AVE. • FRANKLIN PARK, IL 60131-3432

847-455-2300 • www.antiseize.com



SLICKON[®] FLOW-LUBE[™] AEROSOL INDUSTRIAL SPRAY LUBRICANT

WWW.ANTISEIZE.COM

Product Limited Warranty

This information is based on information we believe to be reliable and accurate, but no guarantee of its accuracy is made for a particular application. We urge and recommend that Users pretest their application prior to incorporating the product into use and assume that the User will conduct such testing. Also see warranty statement on website.

Available In:

SIZE: 3 oz. (2.5oz net wt) 20 oz can (15oz net wt.)

P/N: 17068 17064

SLICKON[®] is a Registered Trademark of Anti-Seize Technology